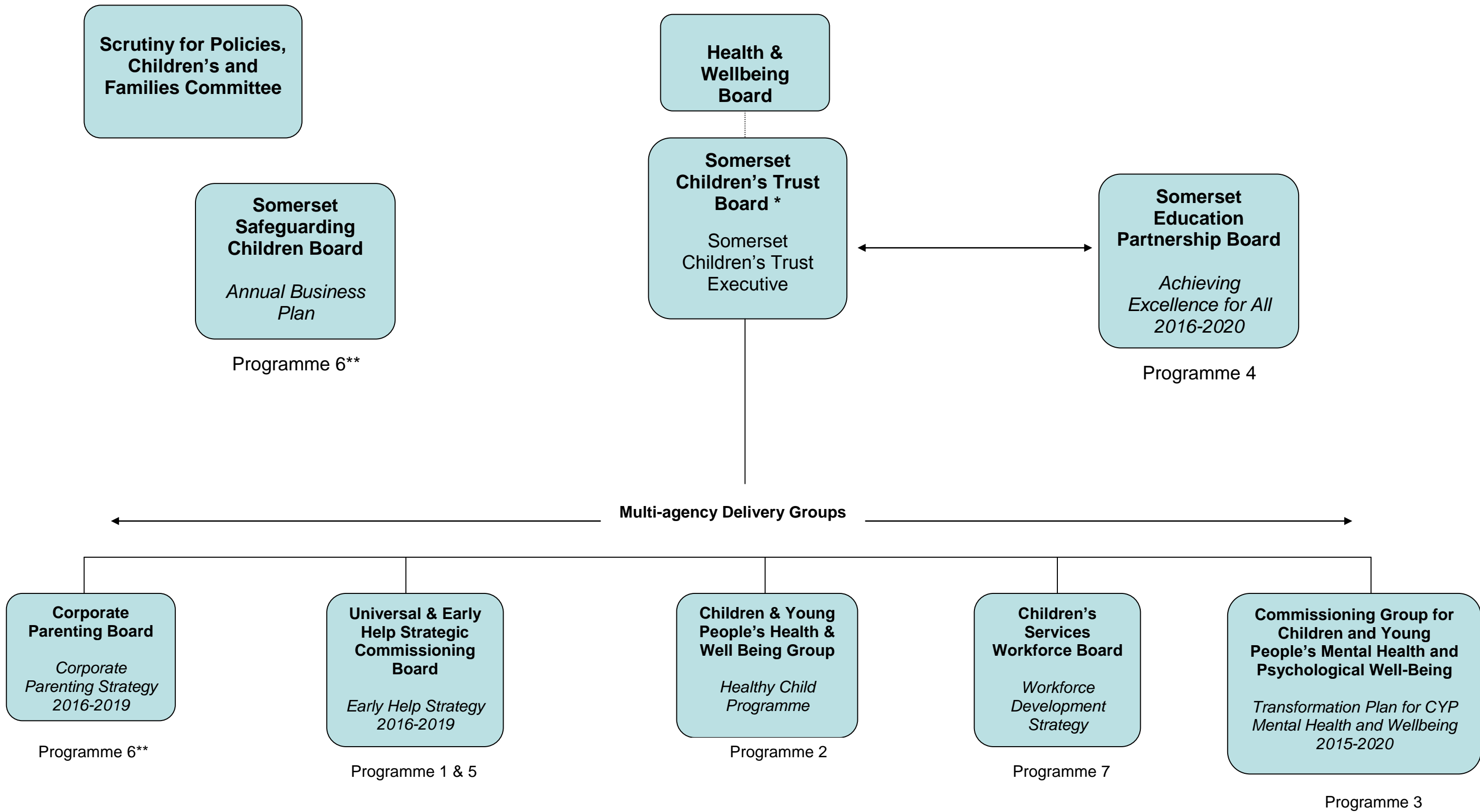


Appendix 3 - Governance Arrangements for the Somerset Children and Young People's Plan 2016-2019



* Plus partners' own Statutory Requirements e.g. Somerset County Council, NHS Commissioners & providers, Avon and Somerset Police, Voluntary & Community Sector

** Safeguarding and social care activity is monitored by a number of different Boards and internally by Somerset County Council Children's Services own performance management arrangements.